



Earth Radial Designs

Created by Isabelle Kirouac

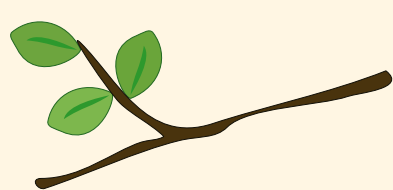
A step-by-step guide to creating your very own design with materials from the earth, inspired by radial symmetry!
(Ages 3+)

STEP 1. COLLECT YOUR TREASURES!

Depending on where you are and the weather, you can include these items in your found treasures!



ROCKS



BRANCHES



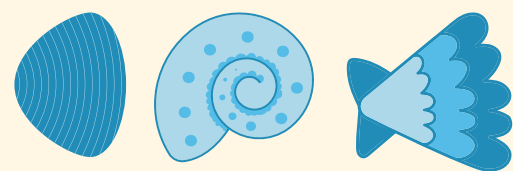
LEAVES



PINE CONES & NEEDLES



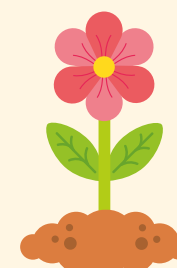
FLOWER PETALS



SEA SHELLS



VEGETABLES



FLOWERS FROM YOUR GARDEN

STEP 2. CHOOSE A SITE!

Choose your unique site in either flat open areas, bases of trees, hills, etc. Your imagination is the limit!

LOOK AROUND FOR THESE SITES:



IN THE GARDEN ON THE GRASS



ON THE BASE OF A TREE

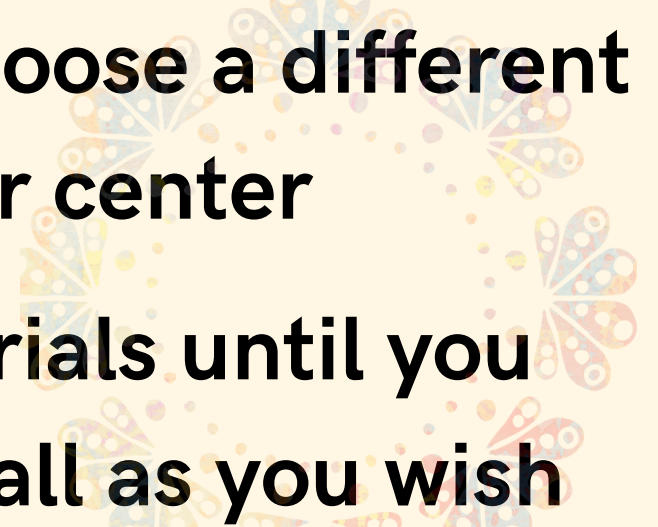


ON A GRASSY HILL

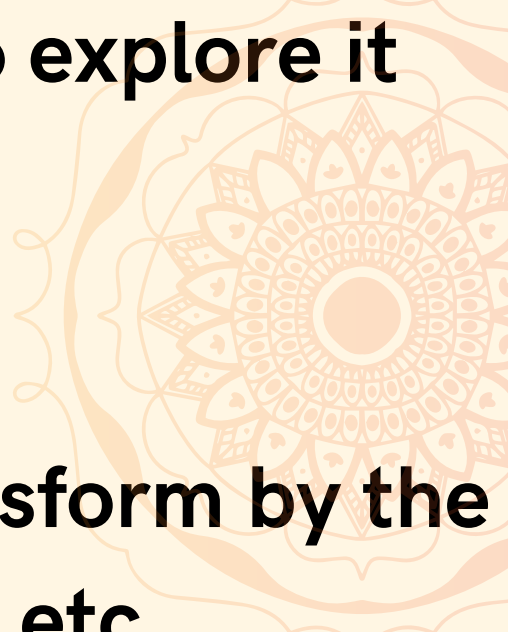
STEP 3. CREATE YOUR OWN DESIGN!

1. Start by laying down your found treasures and organize them by colours, shapes, and/or sizes to visualize your palette

* continue to next page

- 
2. Begin by placing one item in the middle, then choose a different treasure to create a parallel circle around your center
 3. Keep repeating this process with different materials until you are satisfied with your design! This can be as big or small as you wish

STEP 4. ENJOY YOUR VERY OWN EARTH RADIAL DESIGN!

- 
- Enjoy your creation
 - Dance around it
 - Take photos around it
 - Sit by it and meditate
 - Invite your friends to explore it
 - Read
 - Play
 - Let it move and transform by the wind, animals, etc.

*IMPORTANT INFO TO KEEP IN MIND WHEN CREATING YOUR DESIGN:

Since some of these species are invasive and dangerous to other plants, work with these plant materials in the same area where you collected them and avoid using their ripe seeds, stems, or roots in your designs!

Below is a list of non-exhaustive abundant plants that are safe to harvest in small amounts:



BLACKBERRIES (edible)



DANDELIONS (edible)



COMFREY (medicinal)



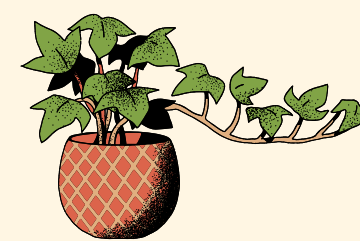
KALE FLOWERS (edible)



BLUE BELLS



MORNING GLORY



IVY

Thank you to event funders & supporters:

